

2024-2025

Port Hunter



16ft Skiff Regatta

Featuring State Championship Heats 1, 2 & 3

Saturday 16th & Sunday 17th November

Port Hunter 16ft Sailing Skiff Club		NSW 16ft Skiff Association	
President	Peter Kershaw	President	Bethany Sherry
Commodore	David Croft	Vice-President	Ross Stutchbury
Vice-Commodore	Anthony Johnson	Commodore	Steve Gallagher
Secretary	Cathy Holmes	Vice-Com/Asst Timekeeper	Lloyd Mulholland
Treasurer	David Brake	Secretary	Steven Iles
Club Captain	Danny Hore	Treasurer/Timekeeper	Michael McMahon
Starter	Mark Rigby	Race Officer	Hugh Leicester
Patron	David Burnett	Deputy Race Officer	Peter Tinworth
		Chairman Hcp Committee	Paul Linnett

*Thanking **Belmont 16s** for the continued support of Port Hunter 16ft Skiff regattas*

Regatta Noticeboard is located at western end of Club Hall.

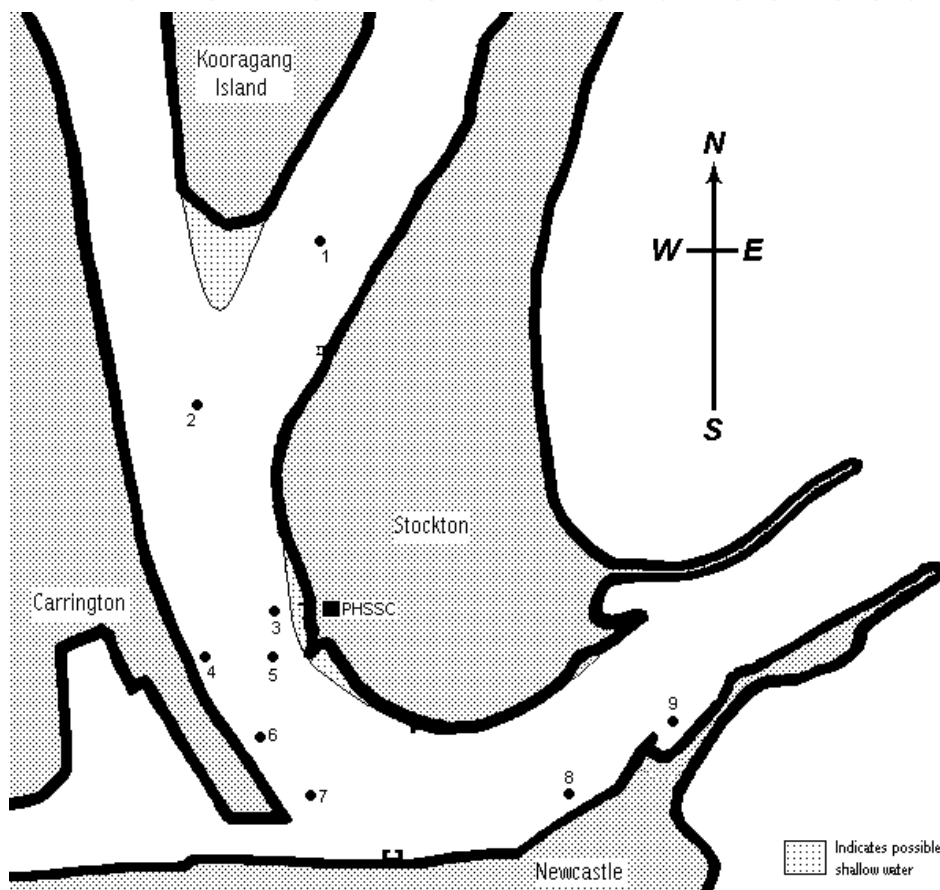
Saturday Tides
High 09:07 2.04m
Low 15:43 0.24m

Sunday Tides
High 09:54 2.06m
Low 16:37 0.24m

*Rounding marks are inflateable round buoys marked with "PHSSC".
Starting and Finishing marks are pins with orange flags with black "S".*

Port Hunter 16ft Sailing Skiff Club

2024-2025 16ft Skiff States Courses



Short Courses

NE Start near 7 to 9p 4s 3s 6p 9p 4s 3s to finish near 7

E Start near 7 to 9p 6p 9p 6p 9p to finish near 7

SE Start near 2 to 8s 2s 8s to finish near 2

S Start near 2 to 7p 1s 5s 1s 5s finish near 2

SW Start near 8 to 7s 3p 4p 9s 7s 3p 4p 9s to finish near 8

W Start near 8 to 6s 9s 6s 9s 6s 9s to finish near 8

NW Start near 8 to 2p 8p 2p to finish near 8

N Start near 7 to 1p 5p 1p 5p 1p to finish near 7

Full Courses

NE Start near 7 to 9p 4s 3s 6p 9p 4s 3s 6p 9p 4s 3s 6p 9p 4s to finish near 3

E Start near 7 to 9p 6p 9p 6p 9p 6p 9p 6p 9p finish near 3

SE Start near 2 to 8s 2s 8s 2s 8s 2s 8s 2s to finish near 3

S Start near 2 to 7p 1s 5s 1s 5s 1s 5s 1s 5s 1s finish near 3

SW Start near 8 to 7s 3p 4p 9s 7s 3p 4p 9s 7s 3p 4p 9s 7s to finish near 3

W Start near 8 to 6s 9s 6s 9s 6s 9s 6s 9s 6s to finish near 3

NW Start near 8 to 2p 8p 2p 8p 2p 8p 2p 8p to finish near 3

N Start near 7 to 1p 5p 1p 5p 1p 5p 1p 5p 1p to finish near 3

Notes: Buoy positioning is approximate only, small variations for prevailing winds may be necessary.
Mark 9 may be set toward Mark 8 position in adverse conditions.